

APPLICATION OF THE MOORA METHOD IN SELECTING THE BEST TEACHER AT SMK METHODIST 8 MEDAN

Arjon Samuel Sitio¹, Anita Sindar Ros Maryana Sinaga²

¹⁾²⁾ STMIK Pelita Nusantara, Medan, North Sumatra, Indonesia

Email: arjonsitio@gmail.com

Abstract

Article Info

Received : 09/11/22

Revised : 23/11/22

Accepted: 24/12/22

Selection of the best teacher is not an easy thing to do by an institution or the management in a foundation. The selection of the best teacher is absolutely necessary so that the management can find out how far the teacher's level of knowledge is in educating students. A decision support system is a form of computer base information system (CBIS) that is interactive, flexible and specifically developed to support the resolution of unstructured management problems to improve decision making. Decision support systems use data as input and with a process, produce output that will help decision makers. The MOORA method is a method that has calculations with minimum and very simple calculations. This method has a good level of selectivity in determining an alternative.

Keywords: SMK Methodist 8 Medan, MOORA Method

1. INTRODUCTION

Teachers are also called educators and teachers, but we know that not all educators are teachers, because a teacher is a professional position which in essence requires certain technical skill requirements and personality attitudes, all of which can be obtained through the process of teaching and learning and practice, Roestiyah NK said that: Methodist 8 SMKS is an educational unit with a SMK level in Glugur Kota, Kec. West Medan, Medan City, North Sumatra. In carrying out its activities, SMKS METHODIST 8 is under the auspices of the Ministry of Education and Culture. The Indonesian Methodist Christian College (PKMI) has levels starting from Elementary School, Junior High School, Senior High School and Vocational High School. With these levels, it requires difficulty in determining the best teacher each semester.

However, the process of selecting the best teacher is not an easy thing for the Foundation to do, because it is a complicated matter and becomes a big obstacle. Therefore, in order to produce a transparent and professional decision, it is necessary to have a system or method for making decisions for selecting the best teacher at SMK Methodist 8 Medan.

2. METHOD

In this study, determining the best teacher using the MOORA method requires teaching data for 2 years. The stages of the research conducted on the application of the MOORA Method are shown in Figure 1 below.

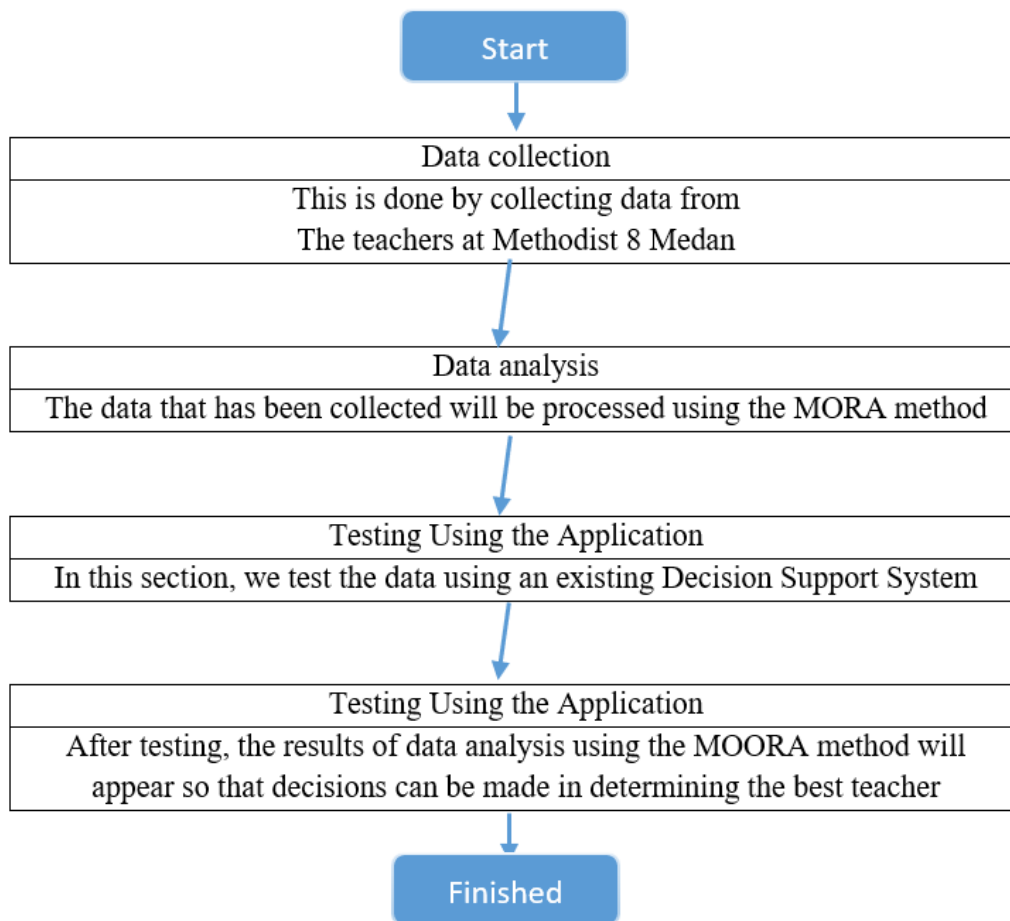


Figure 1. Research Stage

3. RESULTS AND DISCUSSION

Table 1. Data

Criteria	Weight	Type
Age	2,2	benefits
Gender	2,1	benefits
Education	2,1	benefits
Religion	2,8	cost
Income	0.8	cost

Table 2. Value of Each Criterion

Alternative	criteria				
	Age	Gender	Education	Religion	Income
Abdulaziz	3	1	4	1	3
Rudianta Sitepu	3	1	4	2	3
Masana	2	1	5	2	2
Ukurta wake up	3	1	5	2	4
Heman Sudirman	4	1	4	2	4
Josepha Gurusinga	3	1	4	3	3
Johannes Ketaren	4	1	4	2	2

Table 3. Normalization Results Normalization

Alternative	Age	Gender	Education	Religion	Income
Abdulaziz	0.353553391	0.377964473	0.350823208	0.182574186	0.366508333
Rudianta Sitepu	0.353553391	0.377964473	0.350823208	0.365148372	0.366508333
Masana	0.23570226	0.377964473	0.43852901	0.365148372	0.244338889
Ukurta Bangun	0.353553391	0.377964473	0.43852901	0.365148372	0.488677777
Heman Sudirman	0.471404521	0.377964473	0.350823208	0.365148372	0.488677777
Josepha Gurusinga	0.353553391	0.377964473	0.350823208	0.547722558	0.366508333
Johannes Ketaren	0.471404521	0.377964473	0.350823208	0.365148372	0.244338889

Table 4. Weight Normalization Table

Criteria Type Weight	Normalization * Weight				
	Age benefits	Gender benefits	Education benefits	Religion cost	Income cost
	2,2	2,1	2,1	2,8	0.8
Abdulaziz	0.777817459	0.793725393	0.736728736	-0.51120772	-0.293206666
Rudianta Sitepu	0.777817459	0.793725393	0.736728736	-1.022415441	-0.293206666
Masana	0.518544973	0.793725393	0.92091092	-1.022415441	-0.195471111
Ukurta Bangun	0.777817459	0.793725393	0.92091092	-1.022415441	-0.390942222
Heman Sudirman	1.037089946	0.793725393	0.736728736	-1.022415441	-0.390942222
Josepha Gurusinga	0.777817459	0.793725393	0.736728736	-1.533623161	-0.293206666
Johannes Ketaren	1.037089946	0.793725393	0.736728736	-1.022415441	-0.195471111

Table 5. Ranking Results

Criteria Type Weight	Normalization * Weight					Optimization Results
	Age benefits	Gender benefits	Education benefits	Religion cost	Income cost	
	2,2	2,1	2,1	2,8	0.8	
Abdulaziz	0.77781745	0.79372539	0.73672873	-0.51120772	-0.29320666	1.50385720
Rudianta Sitepu	0.77781745	0.79372539	0.73672873	-1.02241544	-0.2932066	0.99264948
Masana	0.51854497	0.79372539	0.92091092	-1.02241544	-0.1954711	1.01529473
Ukurta Bangun	0.77781745	0.79372539	0.92091092	-1.02241544	-0.3909422	1.07909611
Heman Sudirman	1.03708994	0.79372539	0.73672873	-1.02241544	-0.3909422	1.15418641
Josepha Gurusinga	0.77781745	0.79372539	0.73672873	-1.53362316	-0.2932066	0.48144176
Johannes Ketaren	1.03708994	0.79372539	0.73672876	-1.02241544	-0.1954711	1.34965752

4. CONCLUSION

The existence of this community service activity has proven to increase the competency of kindergarten teachers Al - Hijrah in the Serbajadi sub-district regarding technological advances and Skills Improvement in the use of attractive and interactive computer-based Microsoft Office

REFERENCE

- [1] Ali, M. (2009). Development of interactive learning media for electromagnetic field courses. *Electrical education journal*, 5(1).
- [2] Arindiono, RJ, & Ramadhani, N. (2013). design of interactive mathematics learning media for 5th grade elementary school students. *ITS Science and Arts Journal*, 2(1), F28-F32.
- [3] Hamzah N, 2015. Early Childhood Social Development. IAIN Pontianak Press, First published, May 2015.
- [4] Kurniawaty, L., et al, 2021. Use of Learning Videos for Early Childhood in Online Learning. *Journal of Community Service*. DOI: <http://dx.doi.org/10.30999/jpkml.vllil.1295>.
- [5] Negara, HRP, Syaharuddin, S., Kurniawati, KRA, Mandailina, V., & Santosa, FH (2019). Increase student learning interest through the use of Android-based learning media using the mit app inventor. *SELAPARANG Journal of Progressive Community Service*, 2(2), 42-45.

- [6] Nurlaili, 2018. Learning Resources and Game Tools for Early Childhood Education. Journal of Early Childhood Islamic Education. Vol.2, No.1. DOI: <http://dx.doi.org/10.29300/alfitrah.v2i1.1518>
- [7] Nofianti, R. (2019). Picture Story Learning Media Innovation in an Effort to Increase Early Childhood Creativity at Ummul Habibah Kelambir V Medan Early Childhood Education. Journal of the Service of Science, 12(2), 112-118.
- [8] Perwira, Y., Hasugian, PM, & Marpaung, EA (2020). CBI (Computer Based Instruction) Multi Media Learning Media Governance Training to Improve the Quality of Teacher Teaching at Galang Akp Vocational High School. BERNAS: Journal of Community Service, 1(4), 307-315.
- [9] Rahman, N., Maemunah, M., Haifaturrahmah, H., Fujiaturahmah, S., & Sari, N. (2020). Web-Based Learning Media Development Training for Middle School Teachers. JCES (Journal of Character Education Society), 3(3), 621-630.
- [10] Shalikhah, ND (2017). Lectora Inspire interactive learning media as a learning innovation. LPM News, 20(1), 9-16.
- [11] Yazdi, M. (2012). E-learning as an interactive learning media based on information technology. Foristek scientific journal, 2(1).
- [12] Yuniati, N., Purnama, BE, & Nugroho, GK (2017). Making Natural Science Interactive Learning Media at Kroyo 1 State Elementary School Sragen. Speed-Sentra Engineering and Education Research, 3(4).